

SSO Map- User Guide

Baltimore City's new Sanitary Sewer Overflow ("SSO") Public Notice webpage is an interactive map designed to inform the public of SSO locations and waterways that may be impacted. This SSO Map will be updated in real time as the Department of Public Works ("DPW") responds to events and reports to Maryland Department of the Environment ("MDE").

Preliminary Investigations

DPW will respond to potential SSOs when alerted by its automated Event Notification System or calls to the 311 system. When DPW confirms an SSO, the location will appear on the SSO Map as a "New" SSO using a red dot (●). For an active SSO, DPW will inform MDE of the location of the SSO, the stream that could be impacted, and the estimated volume within twenty-four (24) hours of confirmation. At this time, the SSO Map will be automatically updated with the subject information, and the SSO will be changed to a purple dot (●).

On rare occasions, an SSO may persist for an extended period of time after DPW provides a 24-hour Report. In these situations, the SSO will be identified on the SSO Map using a yellow dot (●), and DPW will report on both an estimated volume and an estimated flow rate. The location will remain on the SSO Map and provide live updates on overflow volume until it is fully abated.

Final Reports

After an SSO has been abated, DPW will provide a written report to MDE within five days. These 5-Day Reports include updated estimates regarding overflow volumes. When DPW generates a 5-Day Report, the SSO Map will be automatically updated. If final estimated volumes are less than 10,000 gallons, the SSO will be changed to an orange dot (●). If the final estimated volume is 10,000 gallons or more, the SSO will be changed to a green dot (●).

Special Locations

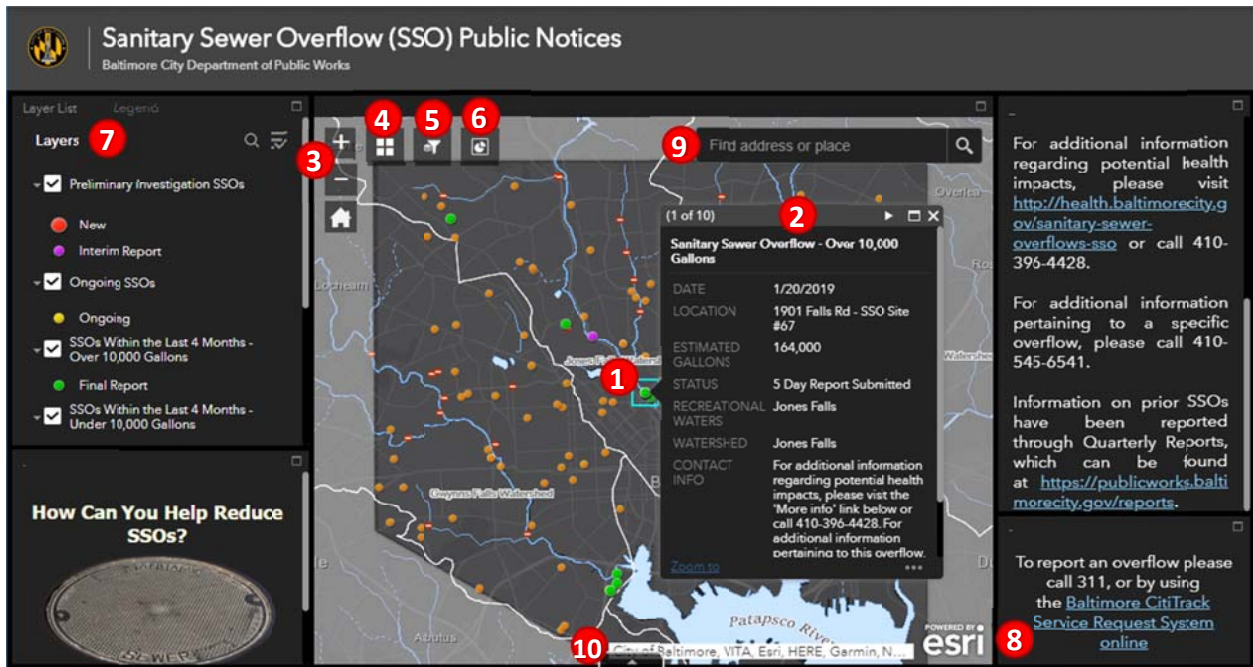
Most of the City's sanitary sewer system predates our anti-pollution laws. When it was constructed, Baltimore City's Sanitary Sewer System was designed with structured overflow points that discharged sewage to nearby streams when the system becomes inundated with stormwater. Baltimore City has eliminated the majority of the overflow structures it has found; however, some cannot be immediately closed. These remaining locations contain flow meters which record overflow volumes, and are identified on the SSO Map by their "Site Number."

Baltimore City also operates two (2) Wastewater Treatment Plants. If an overflow occurs at one of these plants, it will be identified by a blue dot (●).

Posted Pollution Signs

DPW has erected permanent signs along streams where water sampling reveals persistent pollution issues. These locations have been marked on the SSO Map. Nonetheless, DPW reiterates that all streams within the City have been identified as impaired and are not suitable for full-body contact recreation.

Functionality



1. The SSO Map is interactive, and users can click on the colored dots depicting SSO locations to open a window that will provide more information about the overflow.
2. Where a location has multiple SSO events, the window will indicate the number of events in the top left corner. Users can scroll through the reports by using the arrow keys at the top of the window.
3. At the top of left of the SSO Map, users may utilize buttons to zoom in or out of the map.
4. Users can click on the window icon to choose select a different Basemap.
5. Users can click on the funnel icon to filter information by date or receiving water.
6. Users can click on the pie chart icon to obtain rainfall information from the City's rain gauge located at Baltimore Streetcar Museum. This rain gauge provides general data regarding rainfall amounts within the City, and may not represent the most accurate data for a specific SSO location. Nonetheless, it was chosen because it is centrally located and in close proximity to SSO structures #67 and 72.
7. The map contains multiple layers showing the various colored dots. Each of these layers can be turned on or off by clicking the check marks in the top left of the webpage.
8. The Webpage includes tips for helping to prevent SSOs, and links to assist and educate users.
9. This search box can be used to locate an address or place.
10. Click on this tab to display table information for the different SSO types.